



MAIA
Mapping and Assessment for
Integrated ecosystem Accounting

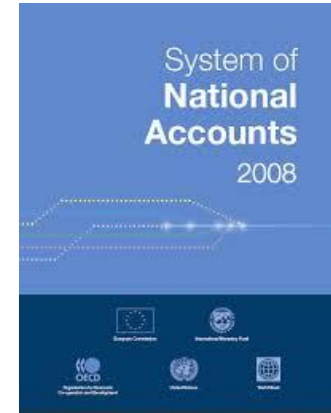
Introduction to Ecosystem Accounting and the MAIA project

Prof. Dr. Lars Hein, Wageningen University

This project has received funding from the European Union's Horizon 2020 research and innovation programme under grant agreement No 817527

THE SEEA FRAMEWORK: Integrating environmental & economic information

- SEEA = System of Environmental Economic Accounts
- Connected to the System of National Accounts: economic statistics
- Part of the statistical system, guidelines developed by the world's statistical agencies (UNSC), UN, IMF, World Bank, OECD, European Commission.
- Two complementary approaches: the SEEA Central Framework and the SEEA Ecosystem Accounts



SEEA ECOSYSTEM ACCOUNTING

- A systematic framework to measure the contributions of ecosystems to economic activity;
- Aligned with the National Accounts.
- Includes ecosystem services flows and ecosystem assets
- Includes physical and monetary information
 - DEM, soils, hydrology, land cover, vegetation type, crop production, NPP, ecosystem use, values of services and assets, ecosystem users
- Information in the form of maps and tables



THE ECOSYSTEM ACCOUNTS

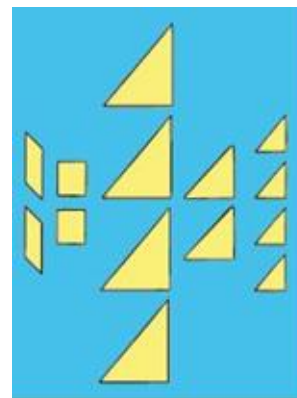
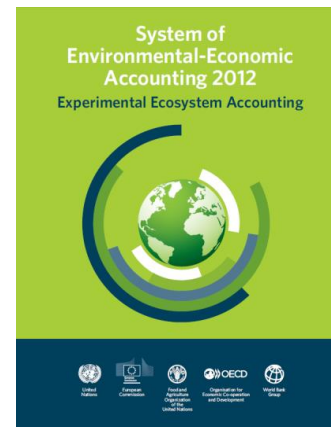
Core accounts

- Ecosystem extent;
- Condition;
- Ecosystem services supply and use;
- Monetary ecosystem assets

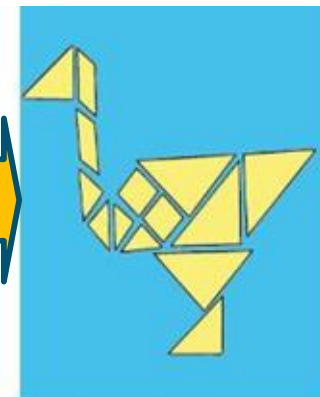
Thematic accounts

- Dealing with aspects such as land, water, carbon and biodiversity

Framework and detailed guidelines ('Technical Recommendations for SEEA EEA') are available



Sectoral Data

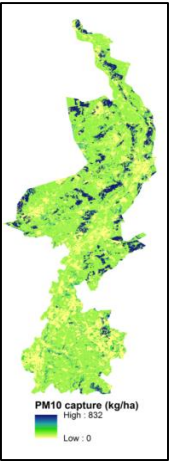
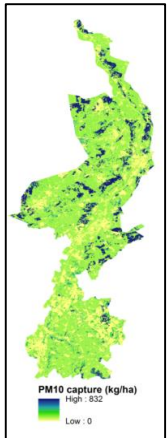


Integrated information

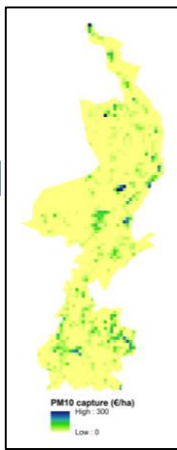
PHYSICAL AND MONETARY MODELS FOR ECOSYSTEM SERVICES



Physical data



Monetary data



Supply and use (physical)

Physical supply, totals		1	2	4	5	21	22	23	24	26	27	28	31	Totals
Ecosystem Units		Non-perennial plants	Perennial plants	Meadows (for grazing)	Hedgerows	Deciduous forest	Coniferous forest	Mixed forest	Heath land	Fresh water wetlands	Natural grassland	Public green space	River flood basin	
Ecosystem services	extent (ha)	53,600	8,100	27,100	2,900	11,400	7,100	10,400	2,100	900	3,100	4,800	14,100	220,900
Crops	tonnes/yr	1,427,300	65,000	-	-	-	-	-	-	-	-	-	-	1,492,400
Fodder	tonnes/yr	140,800	4,700	328,700	-	-	-	-	-	-	-	-	66,900	541,100
Meat (from game)	kg/yr	11,500	1,500	5,900	800	2,500	1,700	2,900	600	200	800	900	2,400	36,800
Ground water (drinking water only)	in 1000 m3/yr	9,000	1,400	4,200	500	1,900	100	500	100	-	700	400	1,300	27,000
capture of PM10	tonnes/yr	400	100	200	-	300	400	500	-	-	-	100	100	2,300
Carbon sequestration	tonnes C/yr	-	2,400	4,900	500	16,500	10,300	15,100	400	200	600	1,200	2,800	59,000
Recreation (cycling)	1000s of bike trips/yr	1,800	300	1,000	100	600	200	400	-	-	100	200	600	9,100
Nature tourism	# tourists/yr	94,000	22,000	136,800	57,000	160,300	93,800	147,400	22,700	11,600	55,400	11,800	94,500	974,300

Supply and use (monetary)

		Non-perennial plants	Meadows (for grazing)	Hedgerows	Deciduous forest	Coniferous forest	Mixed forest	Heath land	Fresh water wetlands	Natural grassland	Public green space	Other unpaired terrain	River floodbasin	Totals
extent	ha	53,629	27,066	2,940	11,414	7,091	10,417	2,149	916	1,121	4,761	22,591	14,126	220,922
Crops	€	35,303,100	-	-	-	-	-	-	-	-	-	-	-	37,908,400
Fodder	€	1,960,300	4,587,100	-	-	-	-	-	-	-	-	-	942,300	7,556,200
Meat (from game)	€	617,700	223,400	-	186,800	192,700	261,100	35,600	12,700	32,900	14,700	211,200	136,000	2,249,400
Ground water	€	3,861,200	1,802,300	193,900	824,200	63,500	218,700	57,300	11,200	295,700	192,600	1,041,100	545,700	11,602,800
Capture of PM10	€	301,200	173,700	30,400	200,200	185,700	206,700	27,200	2,400	46,700	76,100	258,200	85,900	2,275,900
Carbon sequestration	€	300	165,700	18,000	362,500	350,300	513,000	13,200	6,400	13,300	40,500	139,000	95,600	2,006,100
Nature tourism	€	4,410,000	6,349,100	2,357,700	6,930,100	3,162,500	5,443,100	917,000	392,800	2,488,900	625,500	2,870,600	3,162,100	41,816,200
Recreation (cycling)	€	NA	NA	NA	NA	NA	NA	NA	NA	NA	NA	NA	NA	NA
	€	46,654,400	13,301,400	2,600,000	8,703,800	3,954,700	6,638,800	1,050,400	425,400	2,883,500	951,700	4,520,200	4,967,500	105,415,000
value per ha (excl. Amenity)	€/ha	870	491	884	763	558	636	489	454	924	200	200	352	477
value per ha (incl. Amenity)*	€/ha	870	491	884	1,193	988	1,066	489	454	924	688	220	352	553

APPLICATIONS OF THE ECOSYSTEM ACCOUNTING APPROACH, from micro to macro

- Monitoring changes in natural capital and use of NC over time
- Identifying areas, ecosystem types or ecosystem services under threat
- Understanding the dependence of economic actors and activities on ecosystems
- Understanding the contribution of ecosystems to the economy and the economic implications of ecosystem change
- As a ready-to-use database for scenario analysis, designing policies, analysing policy effects, etc.



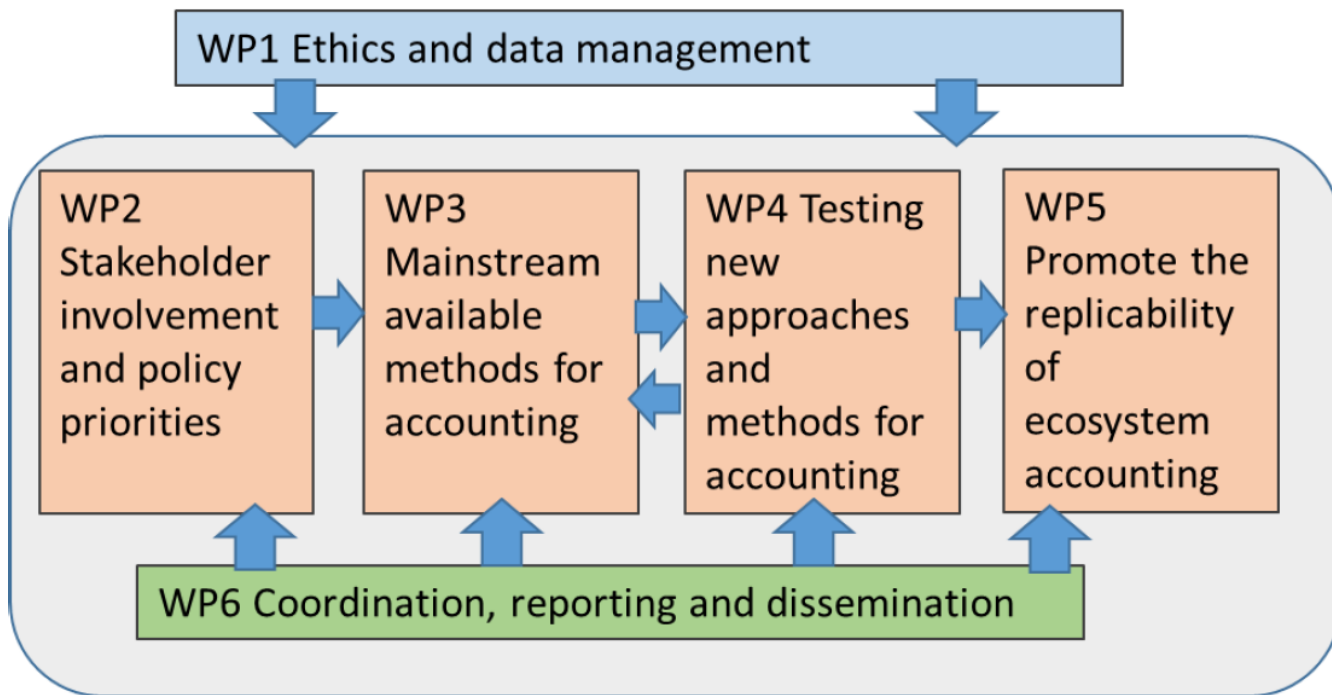
MAIA project: partners

- [Wageningen University](#), The Netherlands
- [Leibniz Universität Hannover](#), Germany
- [National Institute of Geophysics, Geodesy and Geography - Bulgarian Academy of Sciences](#), Bulgaria
- [Finnish Environment Institute](#), Finland
- [Universidad Rey Juan Carlos](#), Spain
- [University of Patras](#), Greece
- [National Statistical Institute of Bulgaria](#), Bulgaria
- [Norwegian Institute for Nature Research](#), Norway
- [INBO Research institute Nature and Forest](#), Belgium
- [Agencia Estatal Consejo Superior de Investigaciones Científicas](#), Spain
- [UVGZ | Global Change Research Institute CAS \(part of The Czech Academy of Sciences | AVCR\)](#), Czech
- [CBS Statistics the Netherlands](#), The Netherlands
- [WCMC LBG](#), United Kingdom
- [Paris Institute of Technology for Life, Food and Environmental Sciences](#), France
- [VITO](#), Belgium
- [Executive Environmental Agency \(ExEA\) at the Bulgarian Ministry of Environment and Waters](#), Bulgaria
- [SarVision](#), The Netherlands
- [SSB Statistics Norway](#), Norway
- [BFN](#), Germany

Mapping and Assessment for Integrated ecosystem Accounting (MAIA)



MAIA project: Work Packages





Progress stakeholders consultations

Country	Date	Type of consultation
Finland	17/12/2018	Stakeholders consultation workshop
Netherlands	05/02/2019	Stakeholders consultation workshop
Belgium - Flanders	27/02/2019	Stakeholders consultation workshop
Germany	01/04/2109	Expert meeting – A larger national stakeholder meeting is planned in autumn 2019
Norway	02/05/2019	Orientation meeting with key stakeholders. National consultation planned in autumn 2019
France	10/05/2019	Stakeholders consultation workshop
Czech Republic	11/06/2019	Stakeholders consultation workshop
Bulgaria	12/06/2019	Stakeholders consultation workshop
Spain	03/07/2019	Stakeholders consultation workshop
Greece	30/09/2019	Stakeholders consultation workshop



MAIA
accounts to
be produced
(tentative)

Country	Scale			Accounts				
	National	Regional	Local	Extent	Condition	ES Supply and Use	Asset	Biodiversity
Belgium		X (Flanders)		X	X	X	X	X
Bulgaria		X (Plovdiv)	X (Karlovo)	X		X		
Czech	X			X		X	X	
France			X (to be decided)	X	X		X	
Finland	X			X	X	X		X
Germany	X			X		X		
Greece		X (Peloponnesus)		X		X		X
Netherlands	X			X				
Norway		X (Greater Oslo)	X (Oslo)	X	X	X		X
Spain	X	X (Andalusia)		X		X		
Total	5	5	3	10	4	8	3	4



MAIA innovations

- To assess how water regulation services can be modelled and included in accounts
- To develop and test innovative approaches for valuing ecosystem services and assets
- To analyse how open access, big data platforms can be used to model cultural ecosystem services
- To assess how biodiversity accounts can be developed
- To pilot marine ecosystem accounts in an EU context



MAIA: viewer



Multi lingual support



Baselayers

MAIA Viewer

Not secure | maiaportal.eu/maia/page.jsp

Open Streets Map

- ▶ Provisioning
 - ▶ Energy
 - ▶ Materials
 - ▶ Nutrition
 - ▶ Water
 - ▶ Biomass
 - ▶ Wild plants, algae and their outputs
 - ▶ Plants and algae from in-situ aquaculture
 - ▶ Crop production Reared animals and their outputs
 - ▶ Cultivated crops
 - ▶ Wild animals and their outputs
 - ▶ Animals from in-situ aquaculture
- ▶ Regulation
 - ▶ Mediation of waste, toxics and other nuisances
 - ▶ Mediation of flows
 - ▶ Maintenance of physical, chemical, biological conditions
- ▶ Cultural
 - ▶ Spiritual, symbolic and other
 - ▶ Physical and intellectual interactions with biota etc.

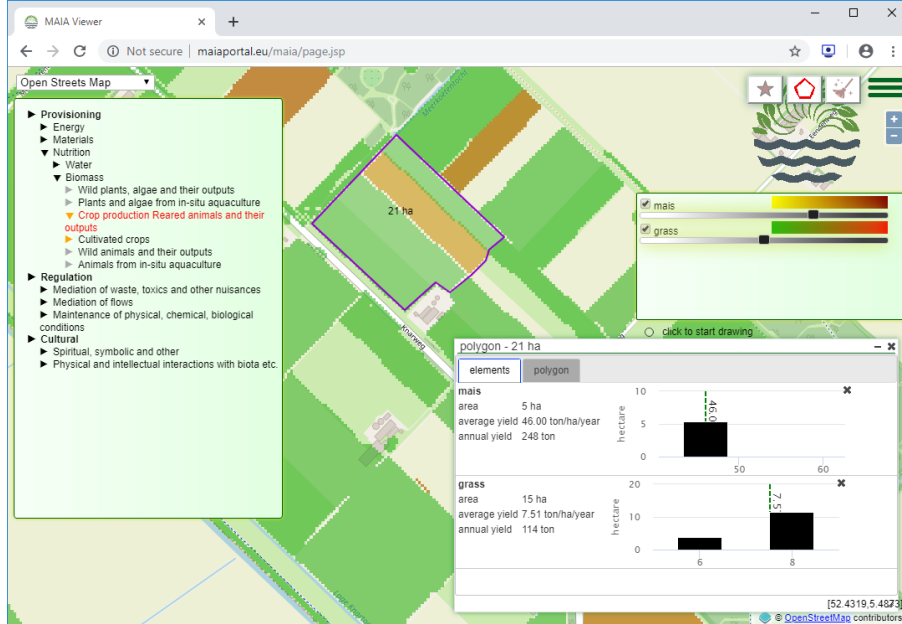
Legend all crops

Value	Color	Color
0	white to black	100
0	white to red	100
0	white to green	100
0	white to blue	100
0	green to red	100
0	blue to red	100
0	yellow to green	100

© OpenStreetMap contributors



Functionalities: Location, Polygon, Administrative unit calculation



- The user may draw a polygon on the map.
- The annual yield can be calculated for any polygon and any data layer.
- Support for community borders, district borders and province borders is planned.

Further policy applications to be developed

Horizon 2020 sister project: WeValueNature



**WE VALUE
NATURE**

NCA in the private sector

- Identify state-of-play, gaps in, barriers/bottlenecks to and opportunities for enhanced private and public sector coherence on NCA and related techniques and develop a strategy for enhanced coherence.
- Produce inspirational case studies and Insight Papers on lessons learnt.
- Gather business experience of the use of effective methodologies and datasets in NCA to stimulate use of these methodologies and datasets in business decision-making.
- Strengthen coherence between the private and public sectors on NCA and related assessments



Collaboration between MAIA and WeValueNature



- Coordination of work streams (regular contact between the two project Coordinators; role in each other's Advisory Group; representation at each other's annual meeting)
- Collaboration on stakeholder involvement and identification of policy uses
- To be discussed: joint case studies where data from SEEA accounts is integrated in/used to support private sector NCAs.



MAIA
Mapping and Assessment for
Integrated ecosystem Accounting

*Mapping & Assessment for Integrated ecosystem
Accounting*
<http://maiaportal.eu/>

This project has received funding from the European Union's Horizon 2020 research and innovation programme under grant agreement No 817527