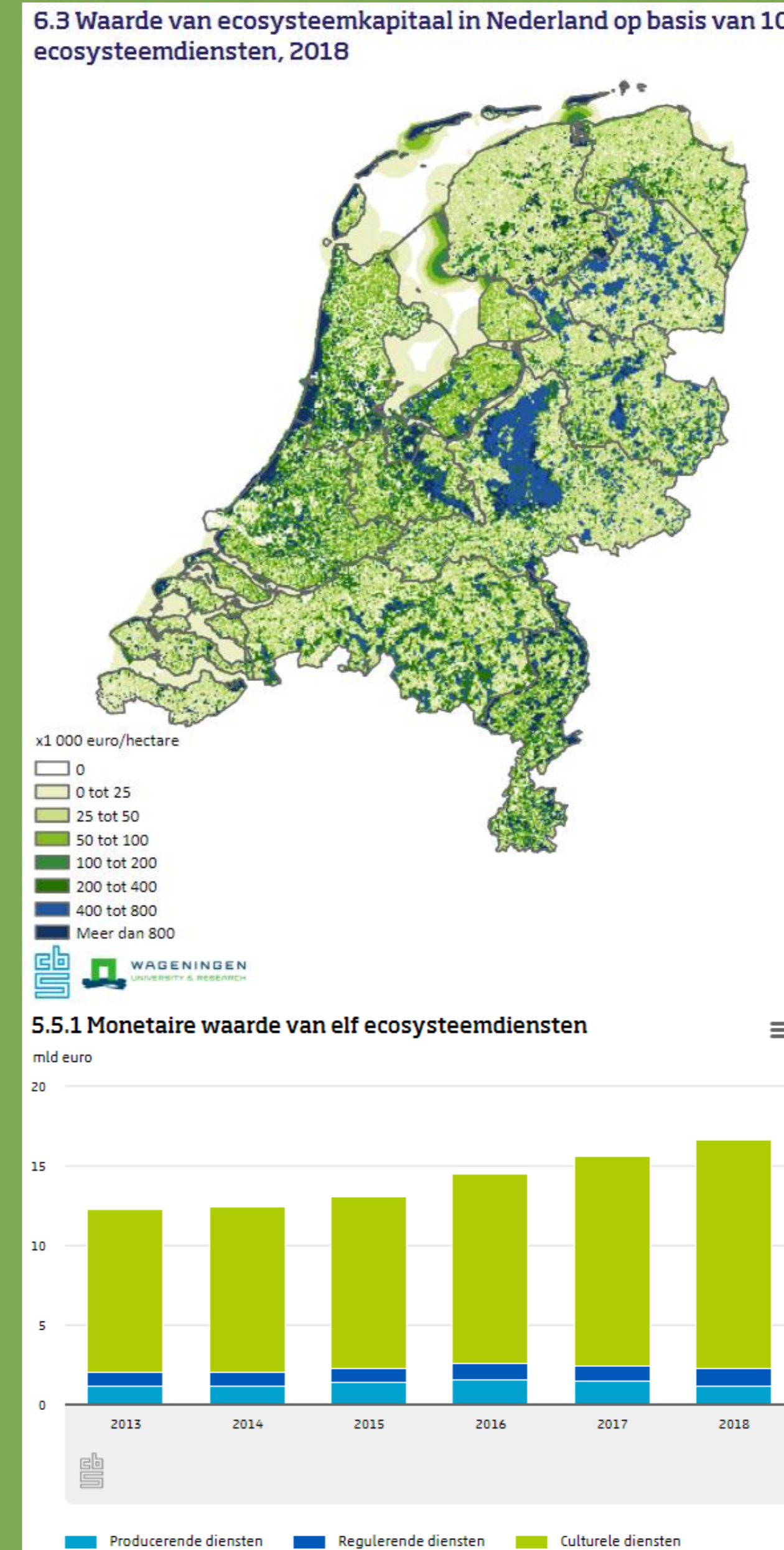
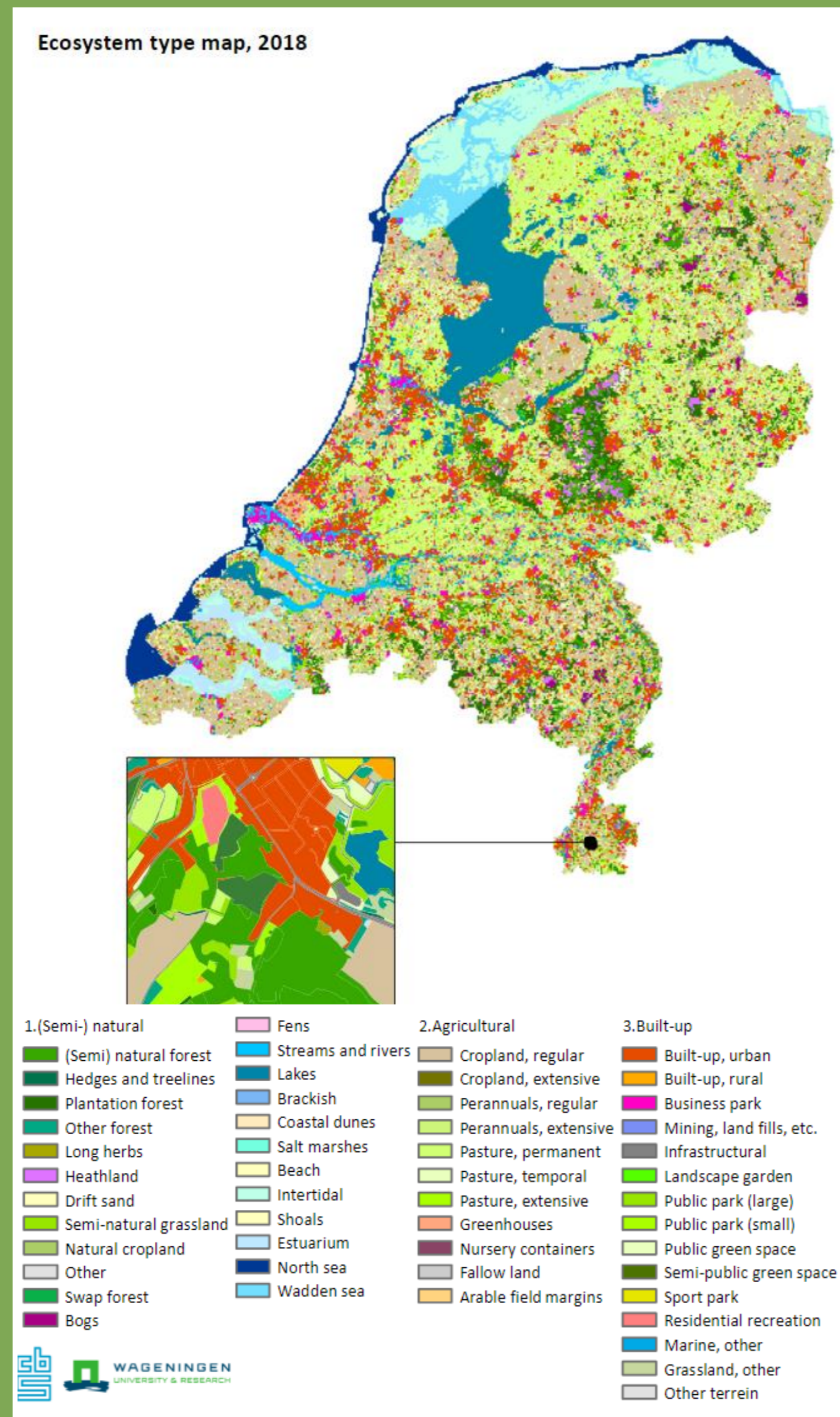


Natural Capital Accounts in the Netherlands

Dutch accounts:

The following accounts are regularly updated on a national scale:

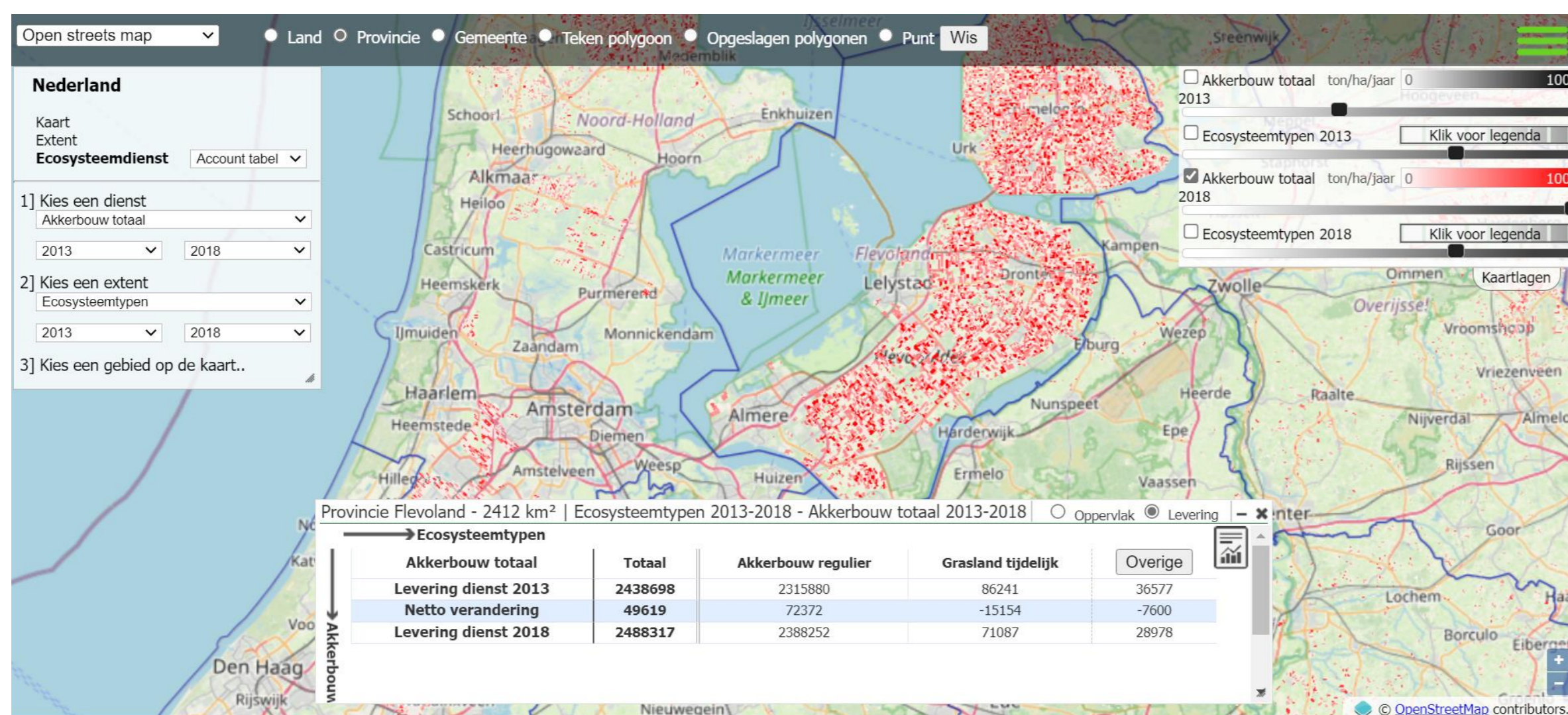
- Extent account
- Condition account
- Ecosystem services accounts (physical and monetary)
- Ecosystem asset account
- Carbon account
- Biodiversity account
- Marine accounts (in development)



Ecosystem services:

- Crop and fodder production
- Timber production
- Drinking water filtration
- Air filtration
- Carbon sequestration
- Pollination
- Protection against heavy rainfall
- Coastal protection
- Reduction of UHI
- Nature recreation and tourism
- Amenity service

Contributions to MAIA:



NKR Viewer (in development by SarVision):

- Viewer in Dutch with Dutch coordinate reference system
- Alignment with NKR as published by StatNL
- Plays role in upcoming stakeholder workshops
- Organization of user workshop end 2022

Valuing ecosystem services and ecosystem assets for the Netherlands

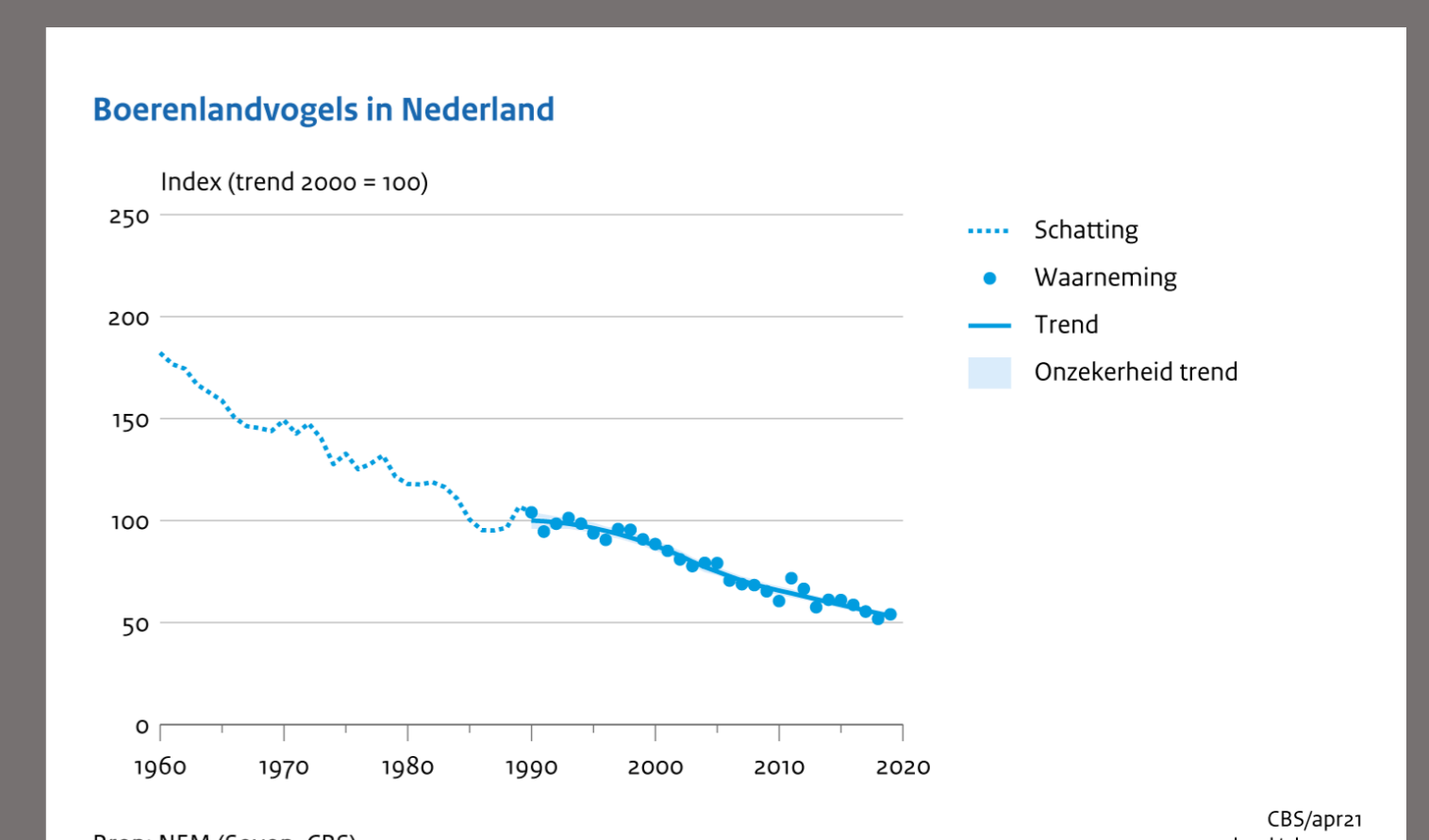
We found that it is important to distinguish between techniques that provide exchange values that are already incorporated in the GDP of SNA and exchange values that are not.

In addition, we found that, from a conceptual and practical point of view, the best valuation techniques to apply are:

- Provisioning services: Rent-based methods (e.g. stumpage prices, rent prices for agricultural land)
- Regulating services: Replacement costs or avoided damage costs methods
- Cultural services: consumer expenditure and hedonic pricing

Integration of biodiversity indicators into SEEA EA

- Regionalization of farmland bird index
- Integration of farmland bird index and other relevant biodiversity indicators in SEEA EA condition and biodiversity accounts
- Development of indicators on relation between landscape structure and farmland bird populations
- Development of pressure indicators on farmland birds



Authors

StatNL: Jocelyn van Berkel, Chantal Blom, Patrick Bogaart, Corine Driessen, Rixt de Jong, Linda de Jongh, Redbad Mosterd, Sjoerd Schenau

WUR: Lars Hein, Marjolein Lof

Website: <https://www.cbs.nl/en-gb/society/nature-and-environment/natural-capital>